

Tips & Tricks

How is the right lingerie size determined?

To determine the right lingerie size, two girth measures are needed: the girth under the bust and the bust size. The following table can be used to determine the correct size.

Step 1 Measure the girth **under** the bust (ribcage) and then determine the order size from the table (32, 34, 36, etc.).

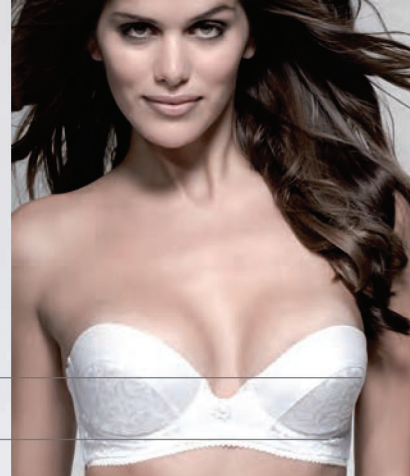
Step 2 Measure the girth **across** the bust (fullest point) and then determine the cup size that corresponds to the (ribcage) order size.

Step 2

Across the bust

Step 1

Girth under the bust



Slips and strings sizes

Stock size (UK)	6-8	10-12	12-14	16-18	20-22
Order size	S	M	L	XL	XXL

Step 1 Girth under the bust in inches	27-28	29-30	31-32	33-34	35-36	37-38	39-40	41-42	43-44	44-46	46-48
Order size (European)	70	75	80	85	90	95	100	105	110	115	120
Order size (English)	32	34	36	38	40	42	44	46	48	50	52
Step 2 Across the bust in inches	32-33	34-35	36-37	38-39	40-41	42-43	44-45	46-47	48-49	50-51	52-53
Cup A	32-33	34-35	36-37	38-39	40-41	42-43	44-45	46-47	48-49	50-51	52-53
Cup B	33-34	35-36	37-38	39-40	41-42	43-43,5	45-45,5	47-47,5	49-49,5	51-51,5	53-53,5
Cup C	34-34,5	36-36,5	38-38,5	40-40,5	42-42,5	43,5-44,5	45,5-46,5	47,5-48,5	49,5-50,5	51,5-52,5	53,5-54,5
Cup D	34,5-35,5	36,5-37,5	38,5-39,5	40,5-41	42,5-43	44,5-45	46,5-47	48,5-49	50,5-51	52,5-53	54,5-55
Cup DD/E	35,5-36	37,5-38	39,5-40	41-42	43-44	45-46	47-48	49-50	51-52	53-54	55-56
Cup DDD/F	36-37	38-39	40-41	41-43	44-45	46-47	48-49	50-51	52-53	54-55	56-57

For example

A bride has a ribcage measuring 34" and a bust size of 40.3". The first step in the table would result in an order size of 38. The bust size of 40.3" translates into a C cup. The right lingerie size for this bride would therefore be 38C.

The sizes in the shaded fields fall outside of Carnival's size range. Below is a description of how to determine the best alternative size.

	32	34	36	38	40	42	44	46	48
A	32A	34A	36A	38A	40A	42A	44A	46A	48A
B	32B	34B	36B	38B	40B	42B	44B	46B	48B
C	32C	34C	36C	38C	40C	42C	44C	46C	48C
D	32D	34D	36D	38D	40D	42D	44D	46D	48D
DD/E	32DD	34DD	36DD	38DD	40DD	42DD	44DD	46DD	48DD

The cup size is good, but the ribcage size is not. What now?

- In this case, use a different girth size but the **same** cup size. **Important to know** if the girth becomes larger/smaller, the cup also becomes larger/smaller. The table below indicates which girth sizes have the **same** cup size. For example, the following sizes have the same cup size: 36A = 34B = 32C.

For example a customer tries on a size 38C torselette. The cup size is good, but the girth is too small. For this customer, try a 40B (not a 40C!). After all, a 40B has the same cup as an 38C and only has a larger girth.

The ribcage size is good, but the cup size is not. What now?

- First check to make sure the torselette is pulled downwards enough at the back so that the cups fit properly on the front.
- The cup must fit closely around the bottom of the bust (ribcage). If there are folds on the top or side of the cups, the cup is too large. Use a smaller cup size with the same ribcage size (For example: 32C = 32B).

- If the breasts hang too low in the cups and do not fit properly into the top of the torselette, the cup is too large. Use a smaller cup size or individual push-up cups. There are several different push-ups available, from push-ups that can be sewn into the lingerie to transparent silicon push-ups (see "Shapers" chapter).
- If the breast is pushed outwards on the side and/or top of the cup, the cup is too small. Use a larger cup size with the same ribcage size (For example: 36B = 36C).
- If the underwire supports are too far from the body and/or pressed under the arms, the cups are too small. Use a larger cup size with the same ribcage size.

The lingerie size does not exist. What now?

Poirier lingerie is available in sizes 32A to 48DD/E. It is possible, however, that the customer's size falls outside of this range or that a particular item is not available in the size needed. Possible solutions:

- Individual fasteners (hook and eye strap) are available that increase the girth (ribcage) as an insert. For example: 44A = 42B + hook and eye strap.
- Use the table above to determine an alternative size. For example, use an 38DD/E for 36F.
- Use push-up cups if the girth is large, but the cup size small (for example: 40A = 40B + push-up cup).